

Henry Park Primary School
Primary 3 Science
Weighted Assessment 1

Name: _____ () Class: 3 _____ Marks: _____ / 15

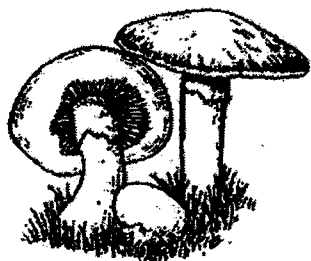
Short Answer Questions (15 marks)

Duration: 30 minutes

Read and answer questions 1 to 7 carefully.

1. Draw lines to match all the things to the correct groups.

[2]



●



●

●

Living thing



●

●

Non - living thing

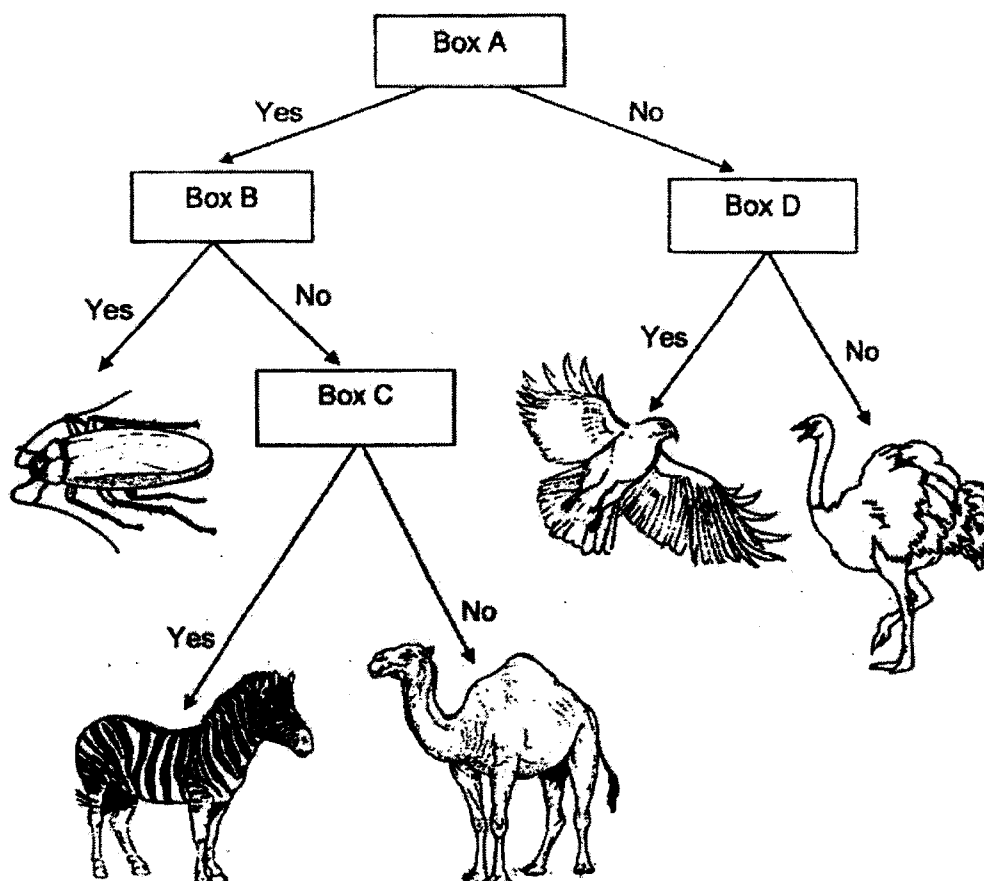


●

P3 SCIENCE WA1

2. Mina and Zoe grouped some animals using the chart shown below.

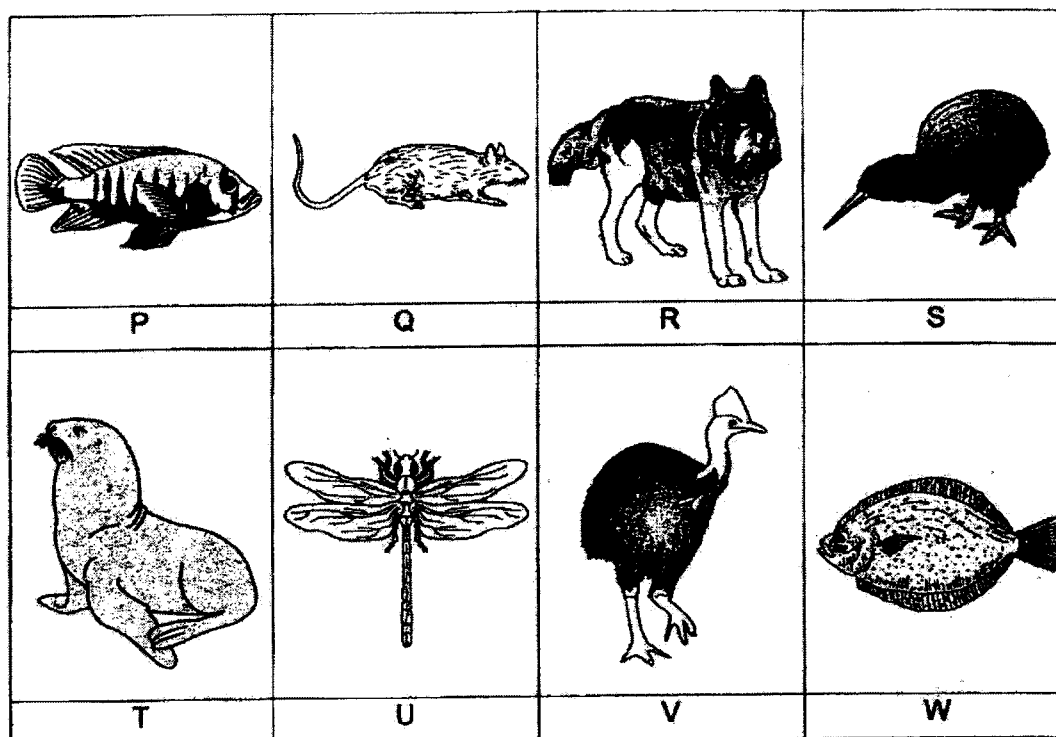
[2]



In the chart above, each box, A, B, C and D, represents a question.
Complete the table below with the correct letters, A, B, C or D.

Question		The question goes into box
(i)	Does the animal fly?	
(ii)	Does the animal have feelers?	
(iii)	Does the animal have more than 2 legs?	
(iv)	Does the animal have stripes on its body?	

3. The pictures show some animals.



- (a) From the pictures above, which three animals belong to the same animal group?

[1]

Write the correct letters in the boxes below.

- (b) From the pictures given, which are the animals that have fins?

[1]

4. Observe the different parts of plant F shown below.



Plant F

The diagram below shows plant G.

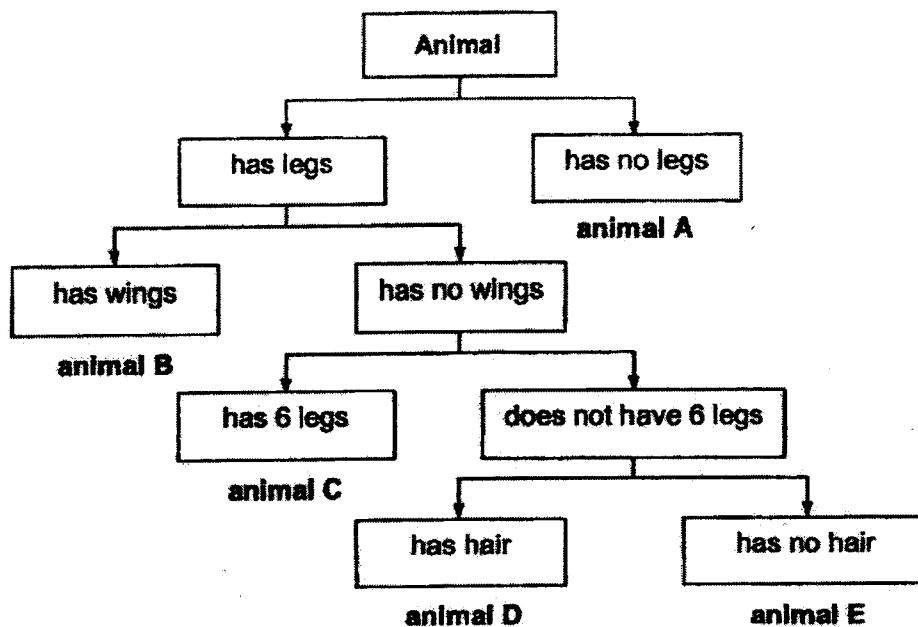
In plant G shown below, circle the parts that cannot be seen in plant F.

[2]



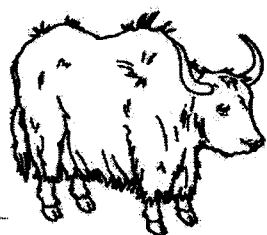
Plant G

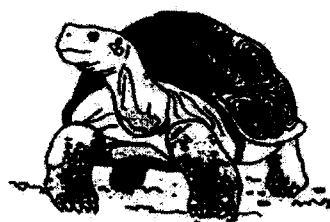
5. The diagram shows how some animals are grouped.



Study the pictures of the animals shown below. Based on the information given above, write the correct letter (A, B, C, D or E) in the boxes given.

[3]







6. Study the pictures shown below carefully. For each picture, write the correct [2] characteristic of the living thing in the spaces provided.

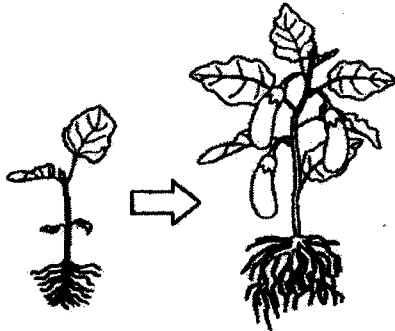
PictureCharacteristic of Living Things

(a)



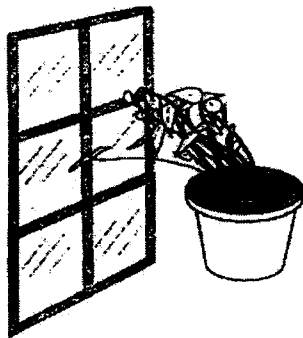
Living things _____

(b)



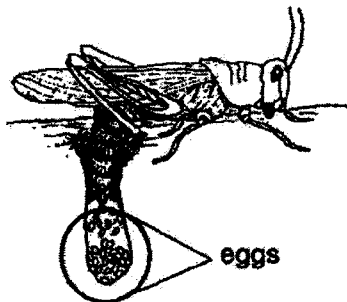
Living things _____

(c)



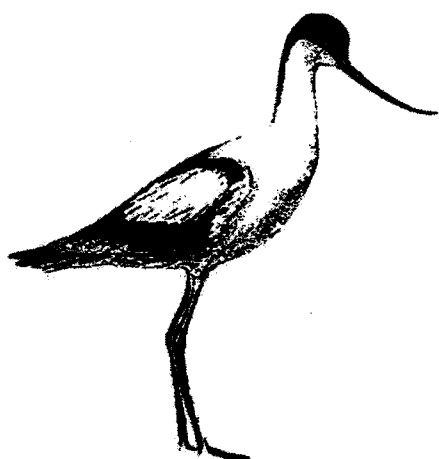
Living things _____

(d)

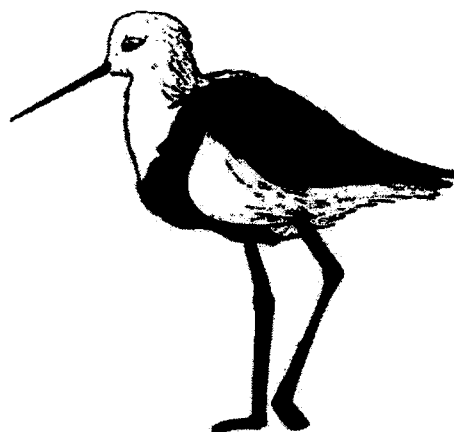


Living things _____

7. The diagrams show animals X and Y. Observe the different parts of animals X and Y carefully.



Animal X



Animal Y

Based on the diagrams given, tick (✓) the correct observations of animals X and Y. [2]

(a) Animal X has a curved beak.

☐

(b) Animal Y has a straight beak.

☐

(c) Animal Y has a black and white head.

☐

(d) Both animals have feathers as outer covering.

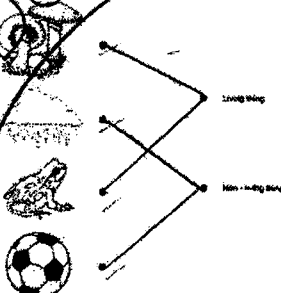
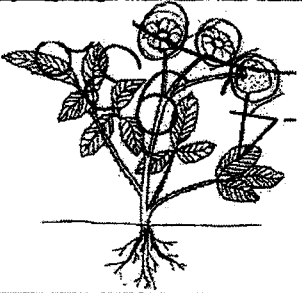
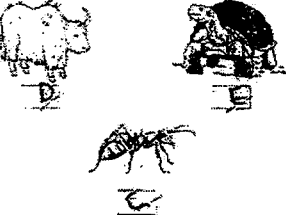
☐

End of Weighted Assessment 1

ANSWER KEY

LEVEL : Primary 3
 SCHOOL : Henry Park Primary School
 SUBJECT : SCIENCE
 TERM : Weighted Assessment 1 and 2

Weighted Assessment 1

Q1	
Q2	(i) D (ii) B (iii) A (iv) C
Q3	(a) Q, R, T (b) P, W
Q4	
Q5	
Q6	(a) Living things need food to survive. (b) Living things grow. (c) Living things respond to changes around them. (d) Living things reproduce.
Q7	tick (a) , (b) and (d)

